

Colonial New England The Dwelling House

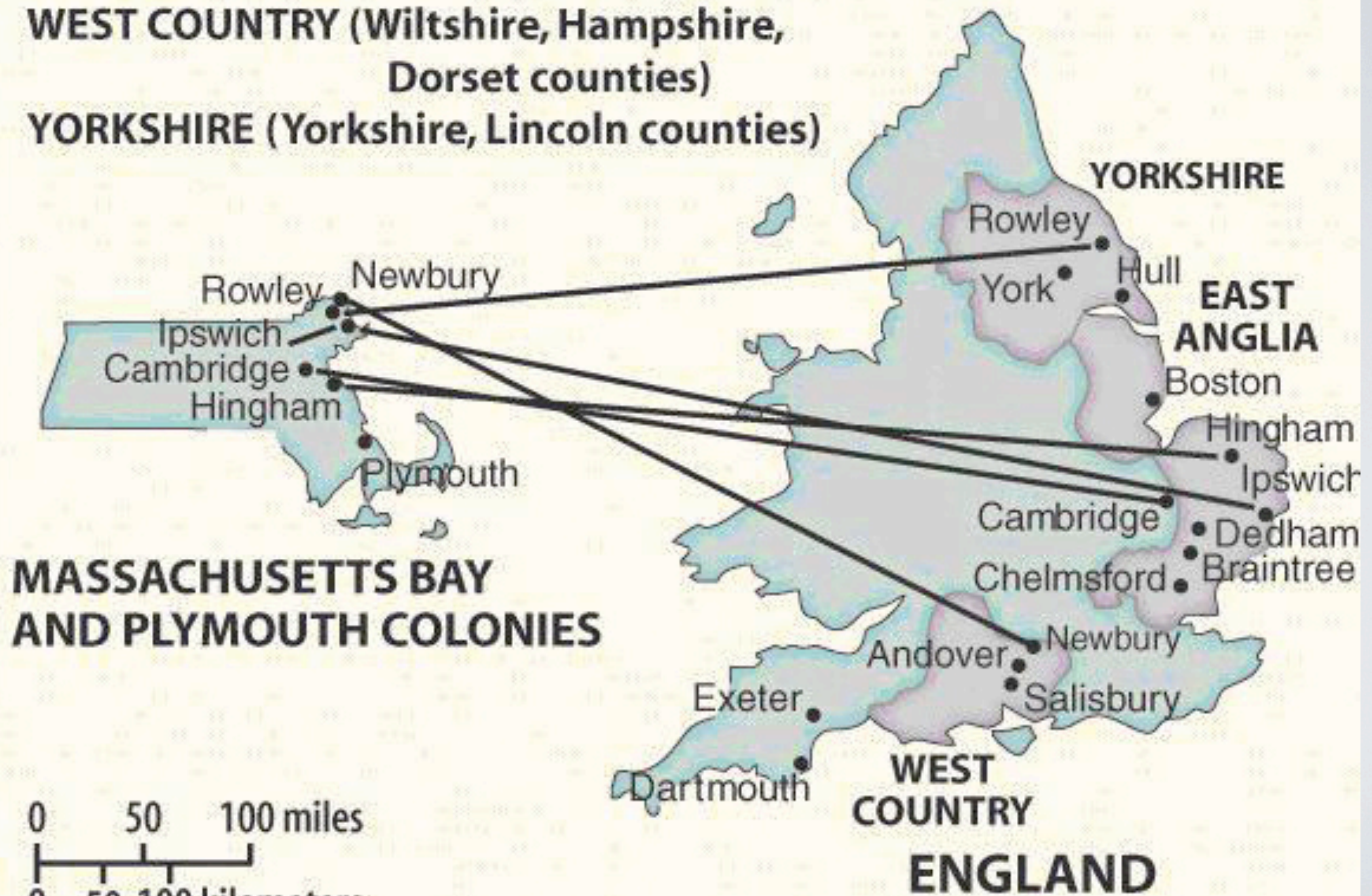


ORIGINS OF MASSACHUSETTS PURITANS

EAST ANGLIA (Norfolk, Suffolk, Essex,
Hartford counties)

WEST COUNTRY (Wiltshire, Hampshire,
Dorset counties)

YORKSHIRE (Yorkshire, Lincoln counties)



Medieval Hall House, Yeoman Farmer, Sussex, England 1400 - 1500

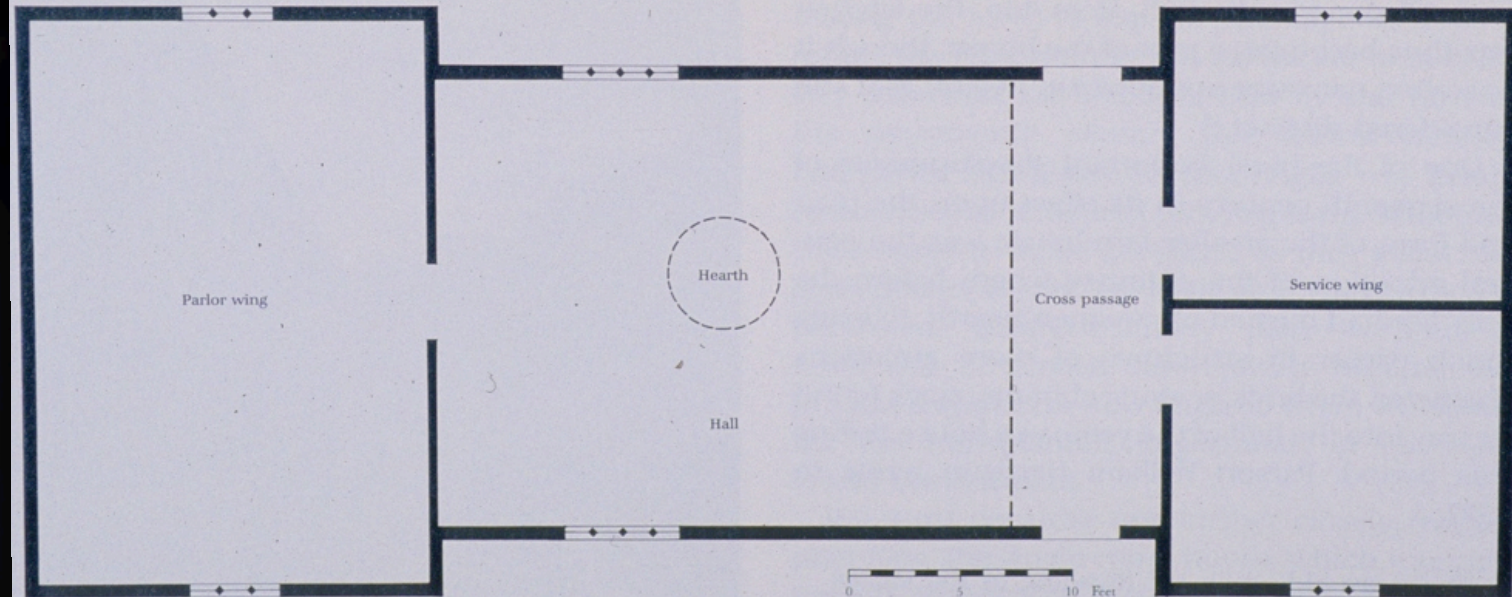
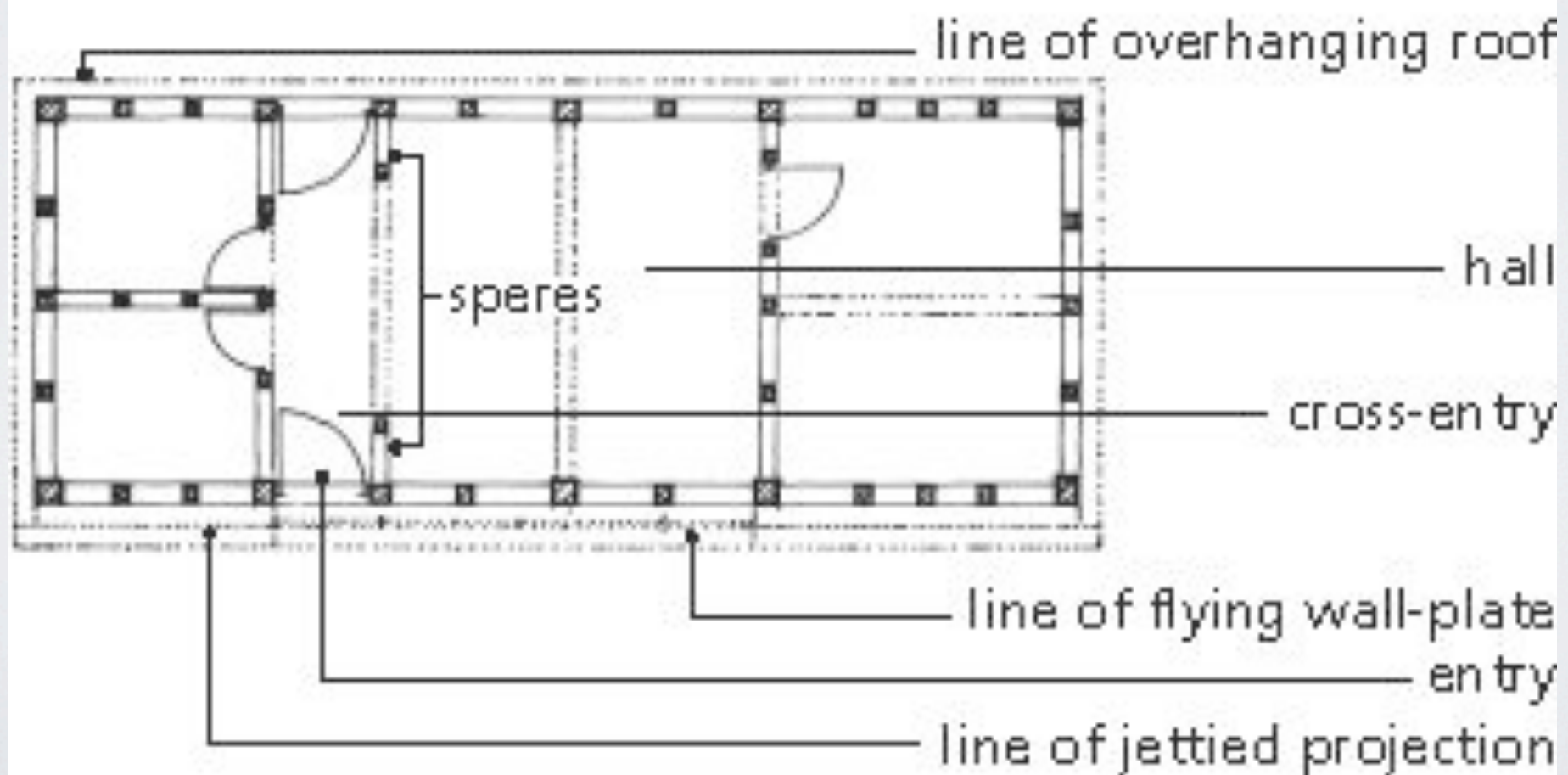
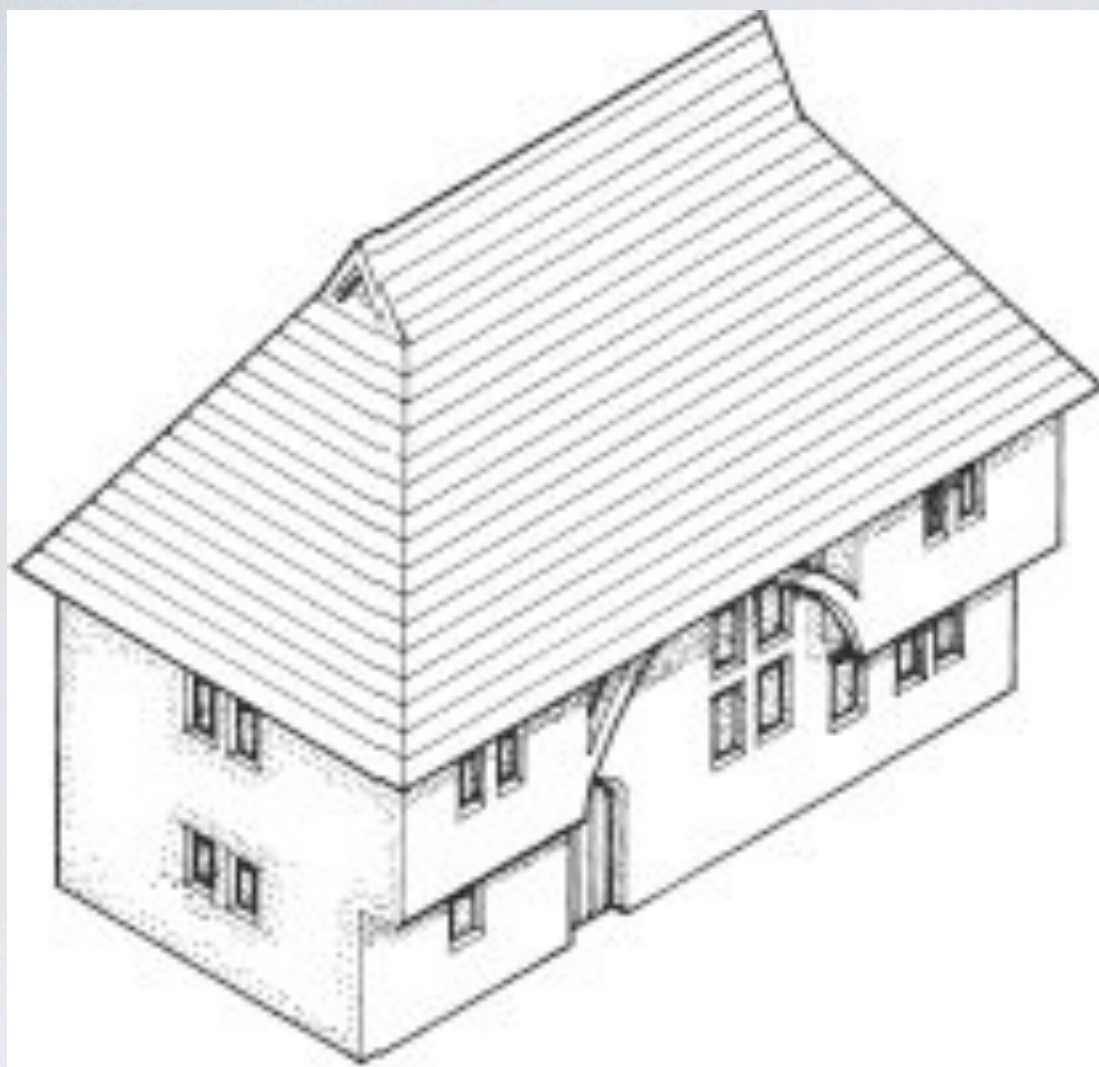


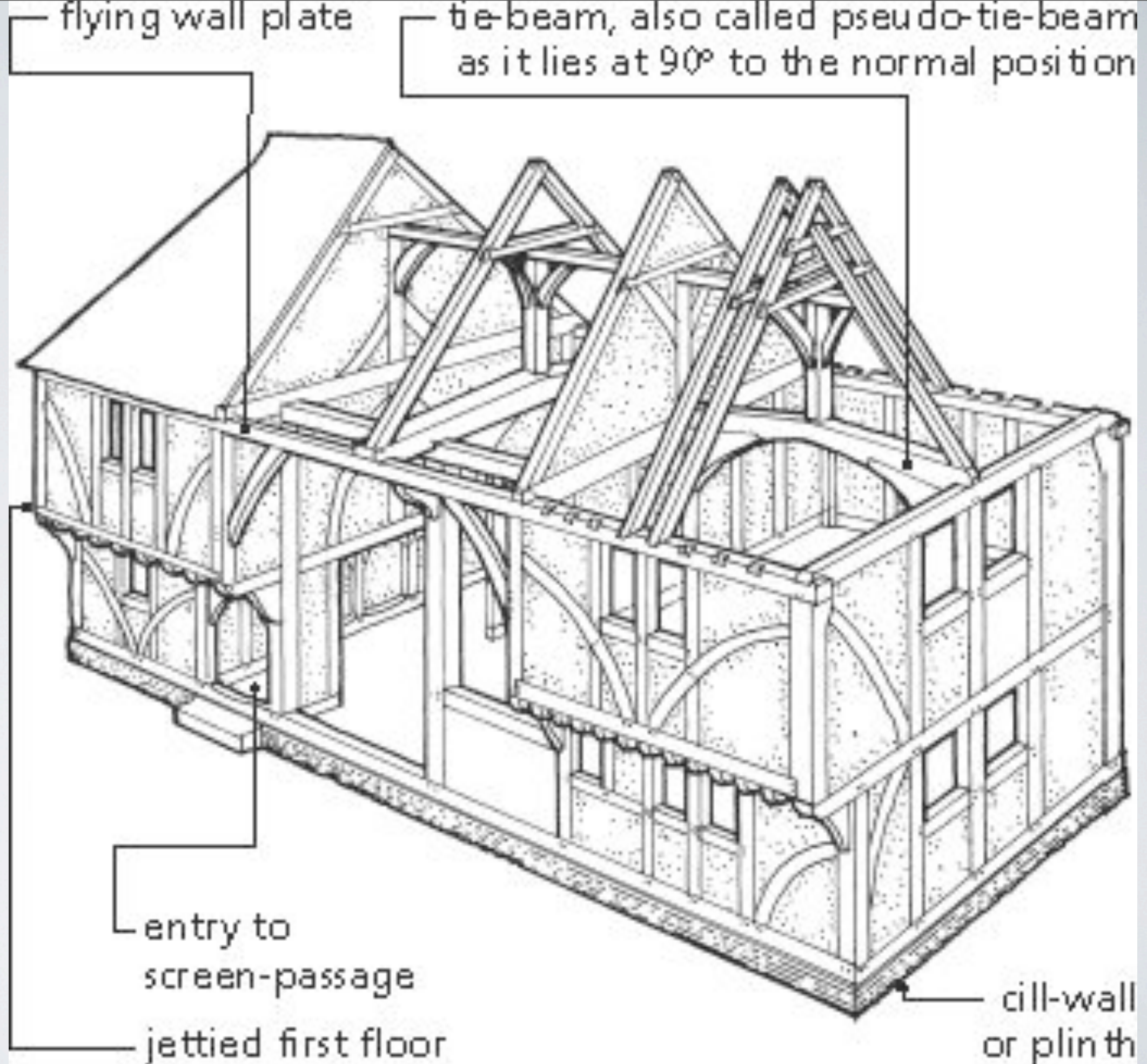
Figure 1. Ground-floor plan of characteristic early sixteenth-century East Anglian farmhouse with single-story hall block open to the roof and parlor and service wings.



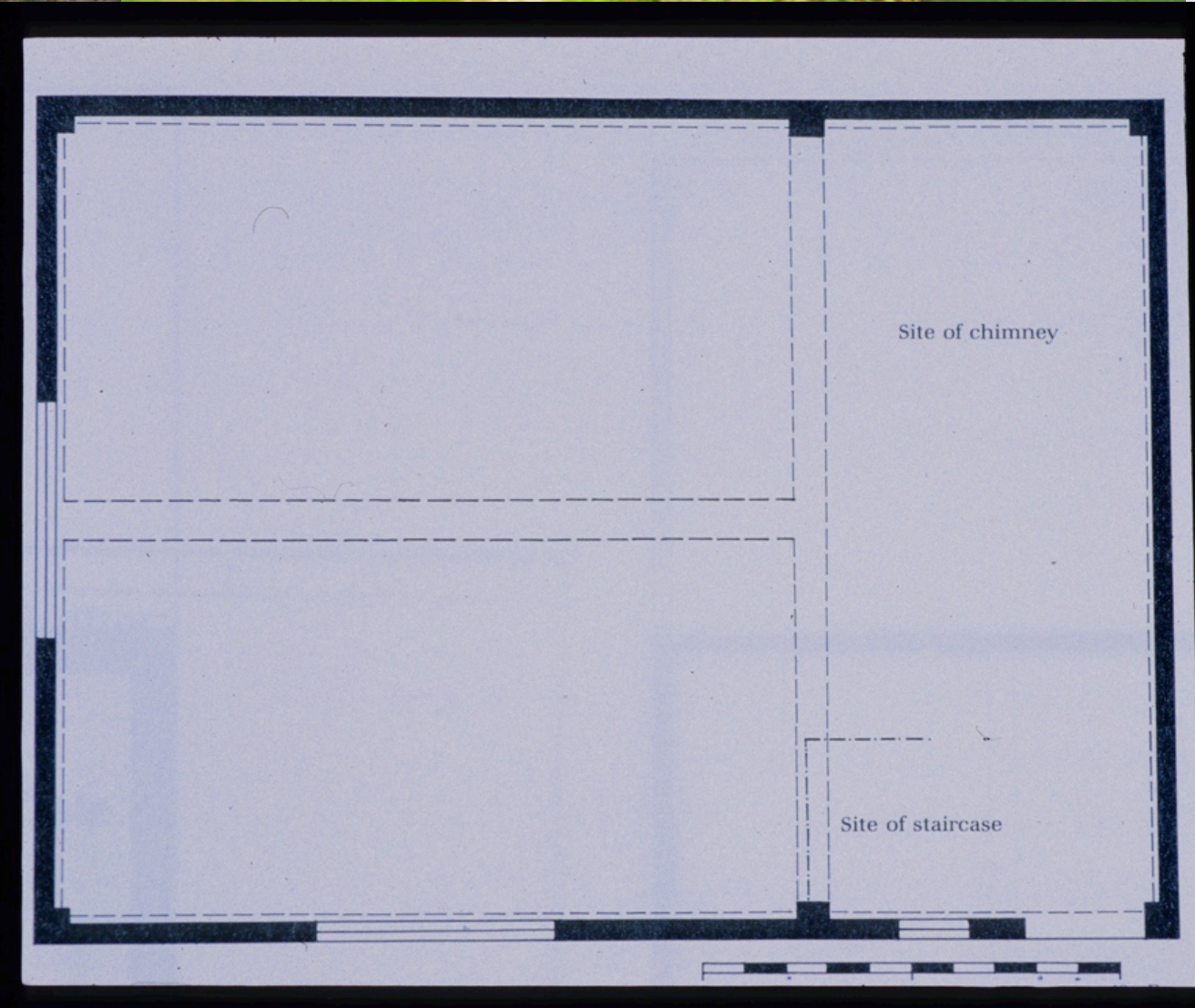


Possible origins and retention of the jetty:

1. In addition to eaves, jetty further protects post-in-hole construction
2. Efficient way to frame a 2-story house without weakening the vertical posts with too many mortise & tenon joints
3. Later, the jetty is embellished to show status due to wealth









Mayflower Cottage Essex, England, 1620

(the form and plan is a
result of the
“Great Rebuilding”
of rural England from c.
1570 to c. 1640, due to
enclosure)

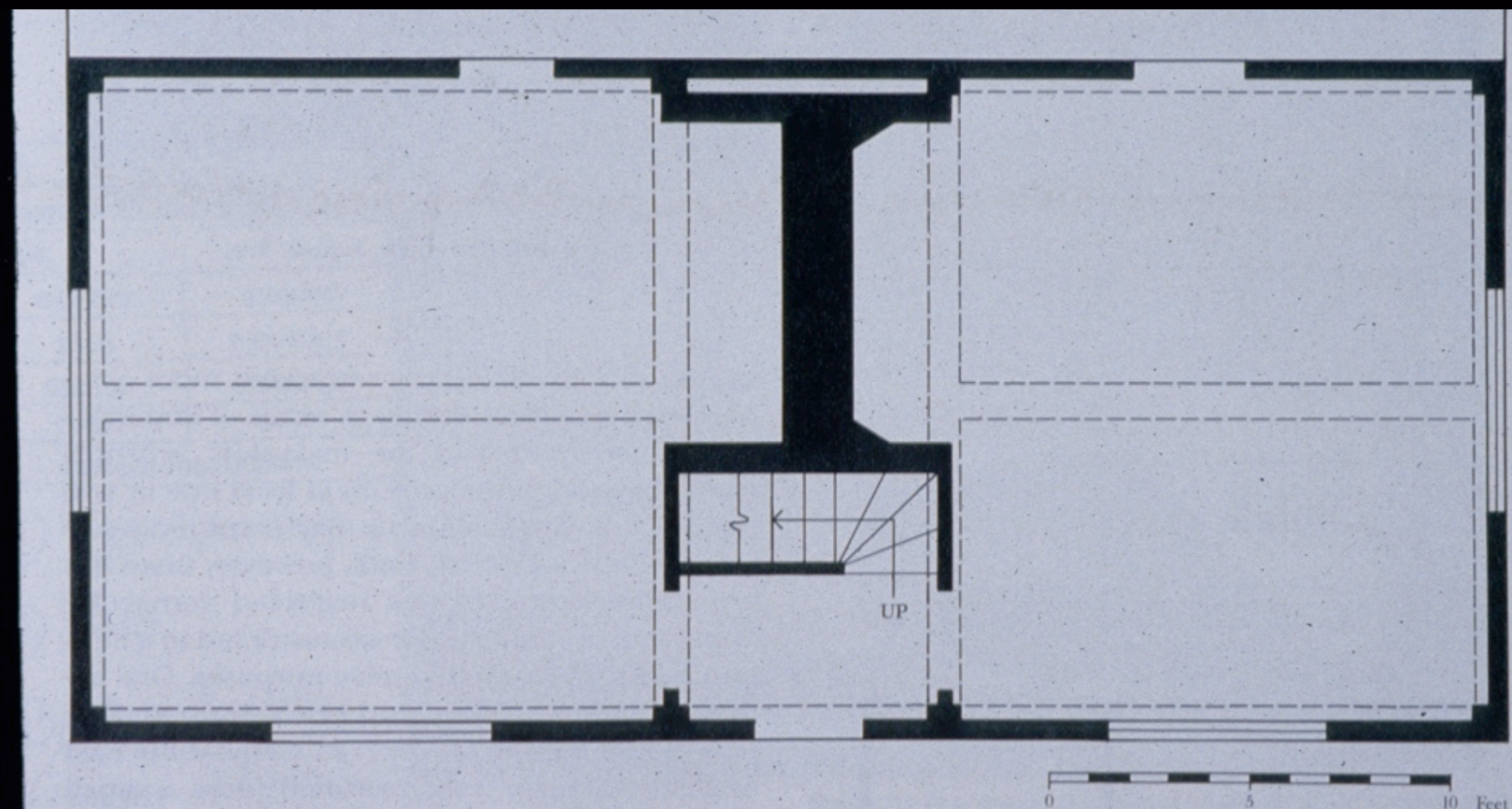
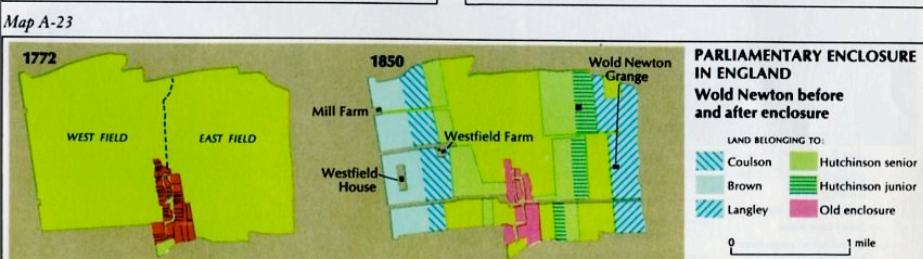
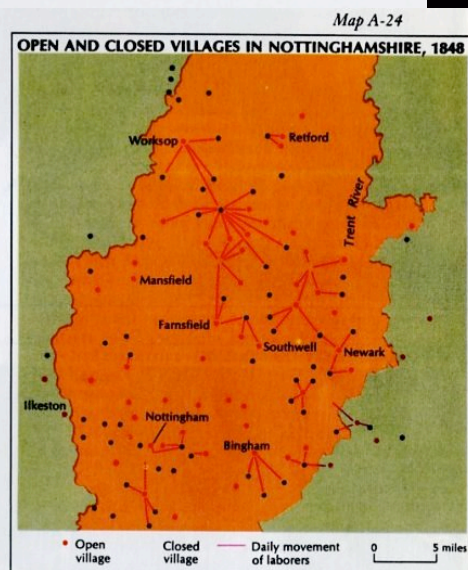
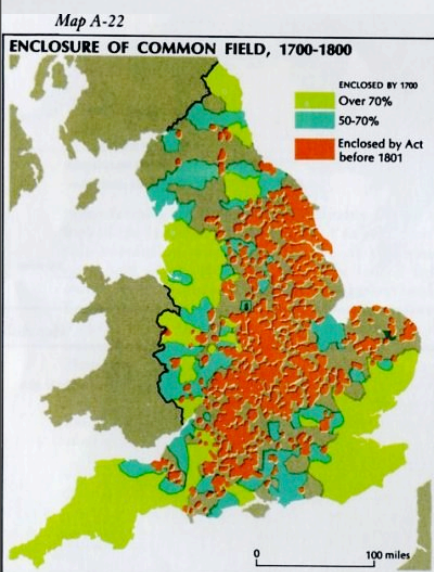
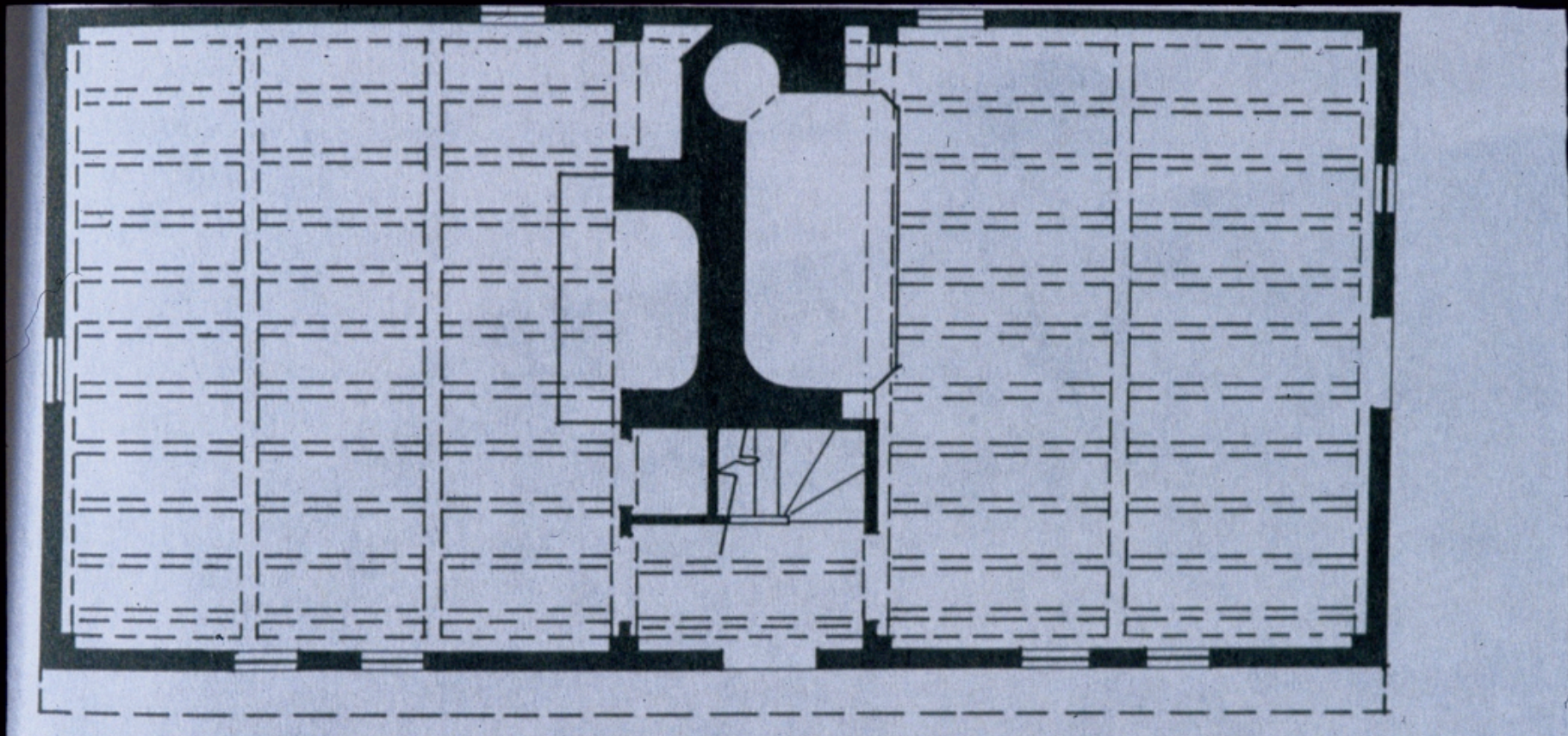
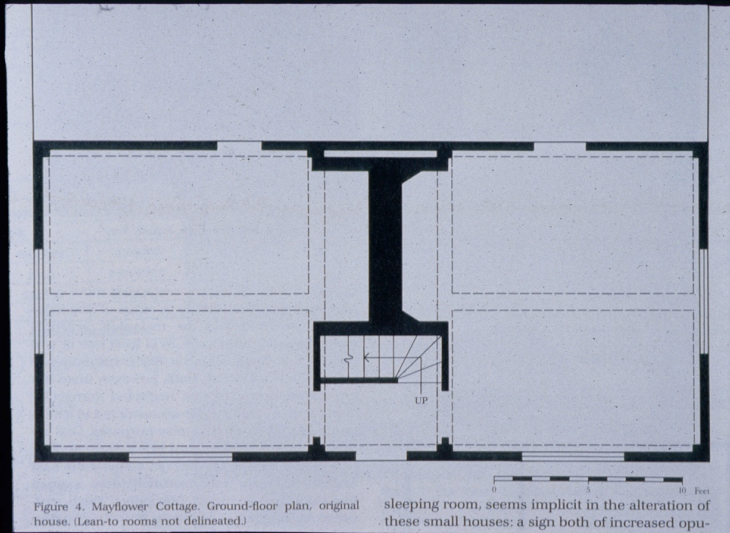
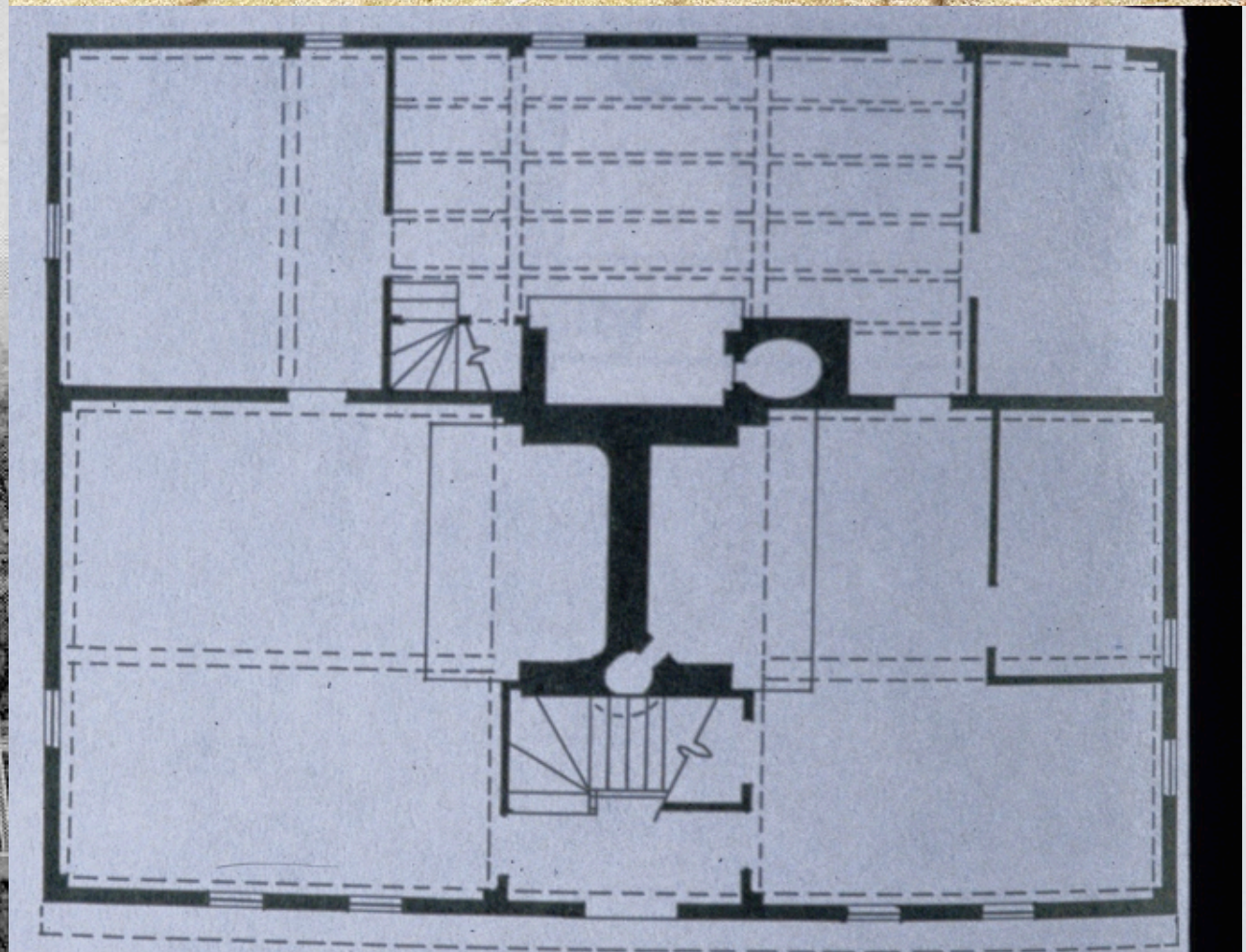


Figure 4. Mayflower Cottage. Ground-floor plan, original sleeping room, seems implicit in the alteration of

Parson Capen House
Topsfield, MA, 1683

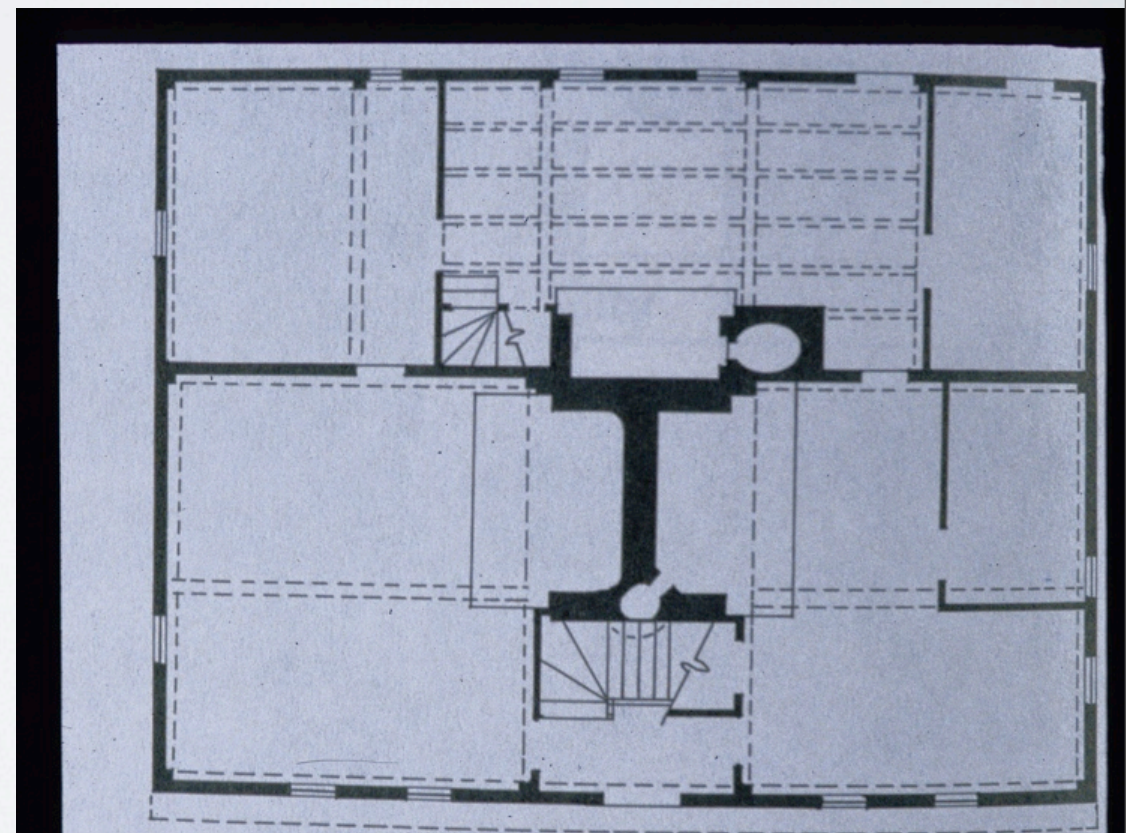


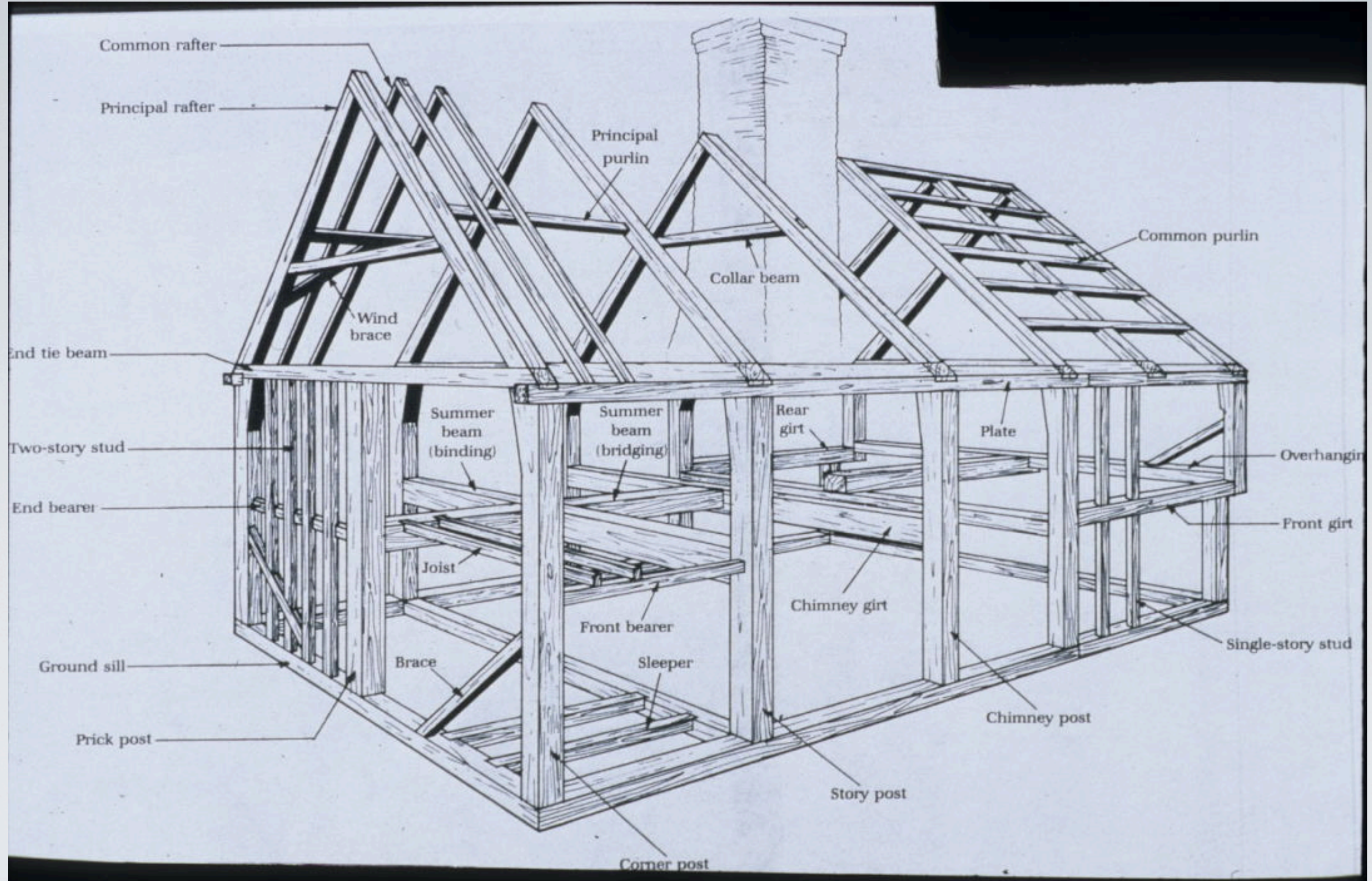
Boardman House
Saugus, MA, 1687
“Saltbox” (no)
“Cat slide” (no)
“Shed roof” (yes)





**Chimney Stack
Jetty (overhang)
Pendant**





New England Box Frame (heavy timber frame)
Rigid
Permanent



Preparing the site

Plymouth Village House

Cutting tenons on studs

Fitting studs to plate





Charring ends of posts



Raising the first bent for bay



Raising second bent



Putting end girt in place



Raising first pair of principal rafters

Frame assembled

Chimney framing

Installing common rafters





Riving clapboards

**Smoothing
clapboards**

**Attaching
clapboards to
wattle and daub
walls**

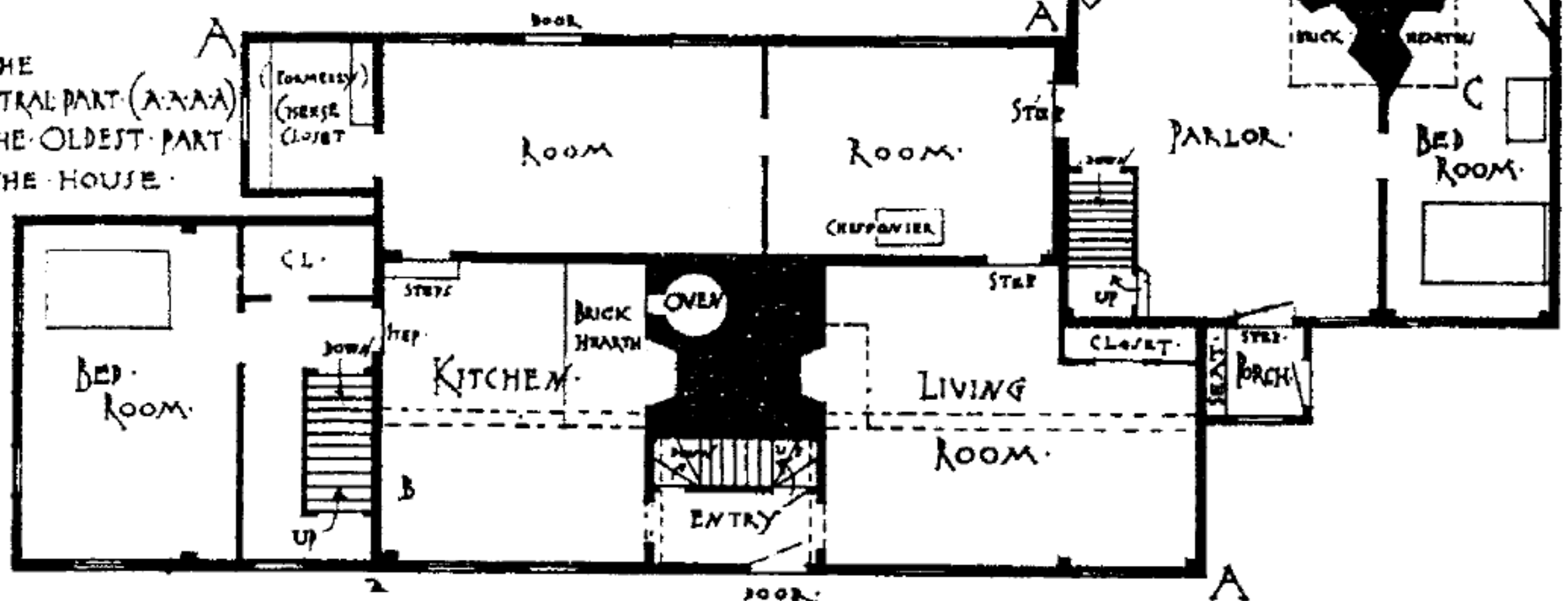




THE OLD "FAIRBANKS HOUSE" DEDHAM, MASS.

5 10 15 20 FEET

THE
(CENTRAL PART (A-A-A))
IS THE OLDEST PART
OF THE HOUSE.





The Command of resources



Crazy for gables



“Rhode Island Stone Ender”

Eleazer Arnold House, 1693

Clemence Irons House, 1691

Johnston, RI



**Spence Peirce House, 1690
Newbury, MA**

Lobby Entrance